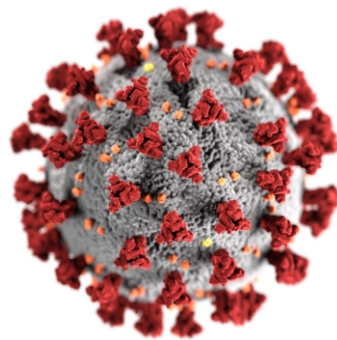




COVID 19 SURGE PLAN

Ernakulam District

2020



DDMA ERNAKULAM



COVID 19 patient management action plan

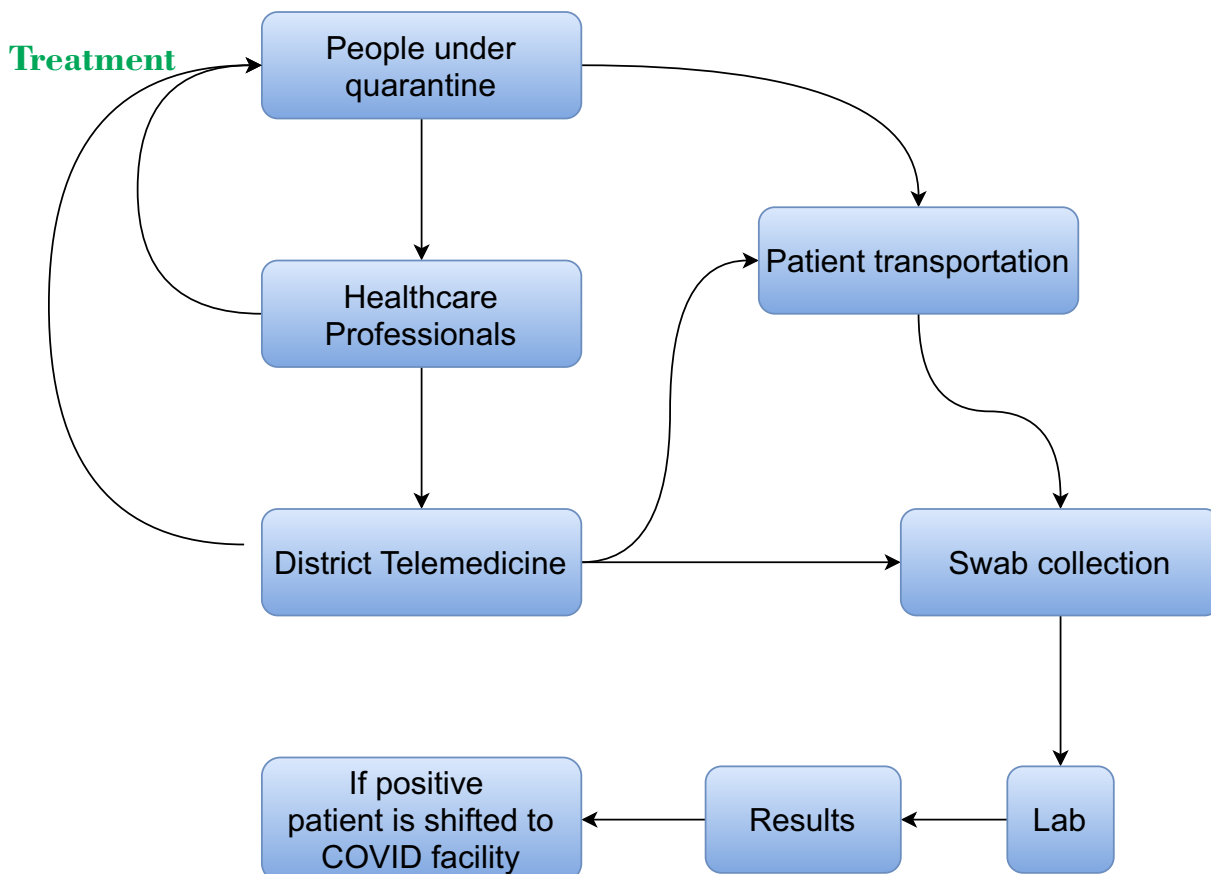
Available facilities:

1. Telemedicine
2. OP consultation in clinics and hospitals
3. COVID care centres (undiagnosed , mild symptomatic patients – during community spread)
4. In patient care in government and private hospitals – 88 hospitals
5. FLTC Major – district level FLTC – ADLUX with 300 CIAL with 300 pax, Rajiv Gandhi Indore stadium with 240 capacity.
6. Block level FLTC : 15
7. Panchayath level FLTC
8. COVID hospitals – Medical college, PVS, AIIMS community centre Njarakkal

Telemedicine workflow

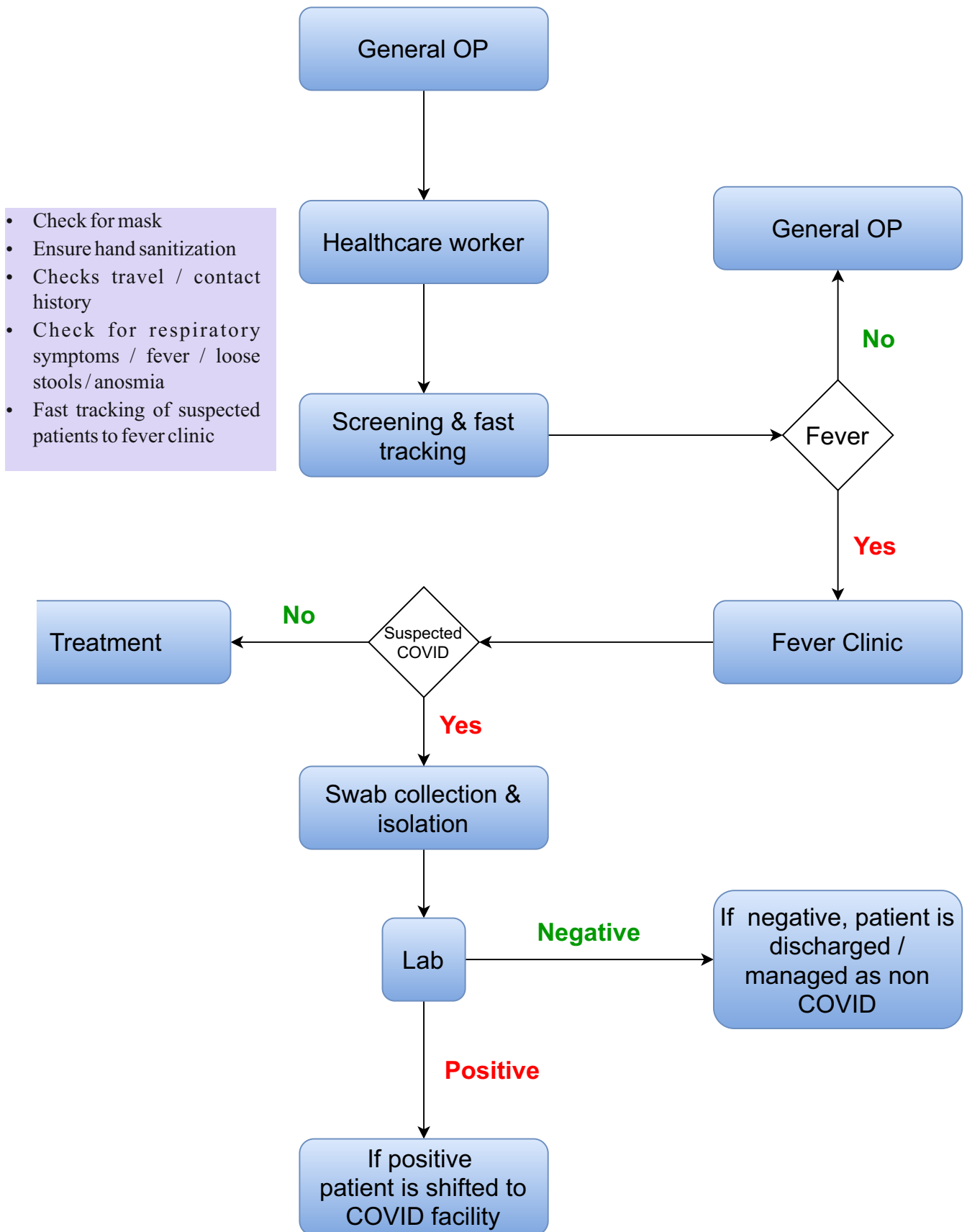
Telemedicine consultation for people who are under quarantine - travellers and contacts of COVID 19 positive patients.

- All people under quarantine are contacted by healthcare workers on a daily basis.
- People under quarantine will contact healthcare professionals if they develop any symptoms.
- Health professionals will manage and prescribe medicines
- If further evaluation is needed, they will be directed to district telemedicine (20 doctors & working 24 x 7) and teleconsultation will be arranged
- They will contact through whatsapp call 3 hourly / 8 hourly / daily.
- If needed swab collection will be arranged (transportation)





Management of general patients



Note: General public may also use telemedicine system for consultation before going to hospital



At all health facilities

Healthcare worker *should*

- Check for mask
- Ensure hand sanitization
- Checks travel / contact history
- Check for respiratory symptoms / fever / loose stools / anosmia
- Fast tracking of suspected patients to fever clinic

In fever clinic –

Patient is examined and if admission is needed, isolation is arranged and swab should be taken. If swab collection facility or isolation facility is not available, patient should be transported to nearest health facility where swab collection and isolation are available.

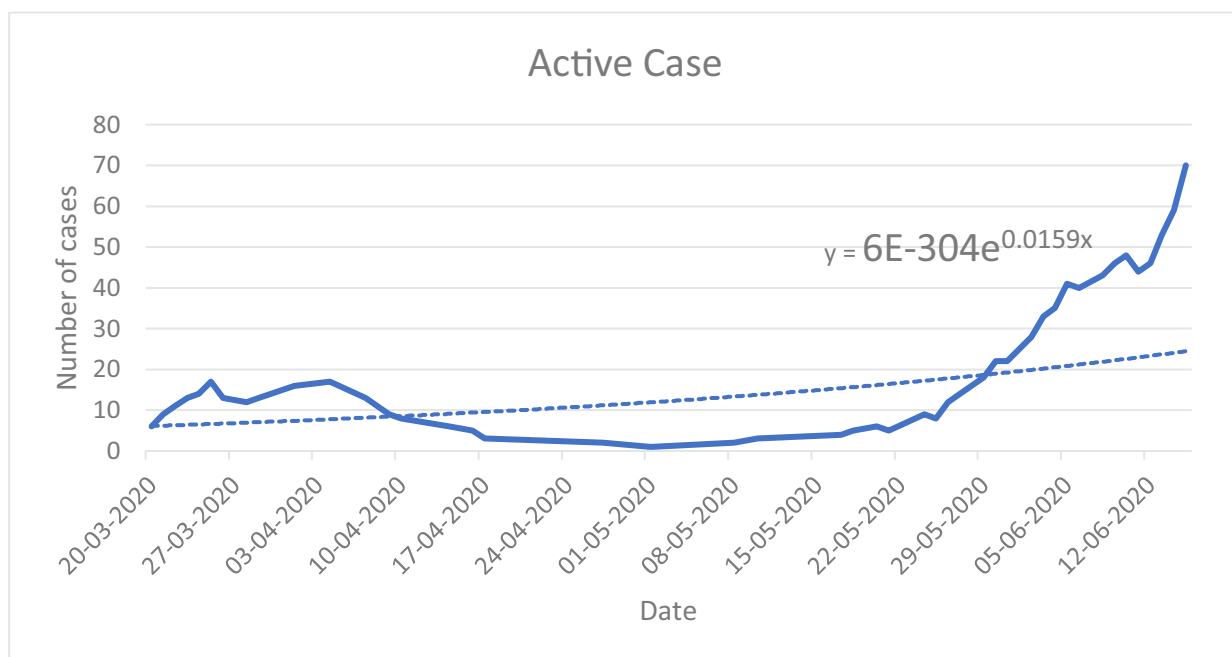
After swab collection

- ✓ Patient will be kept under isolation till results are out.
- ✓ If positive patient will be shifted to COVID facility



Surge Plotting and Preparedness in Ernakulam

The number of active cases in Ernakulam is following the shown trend.



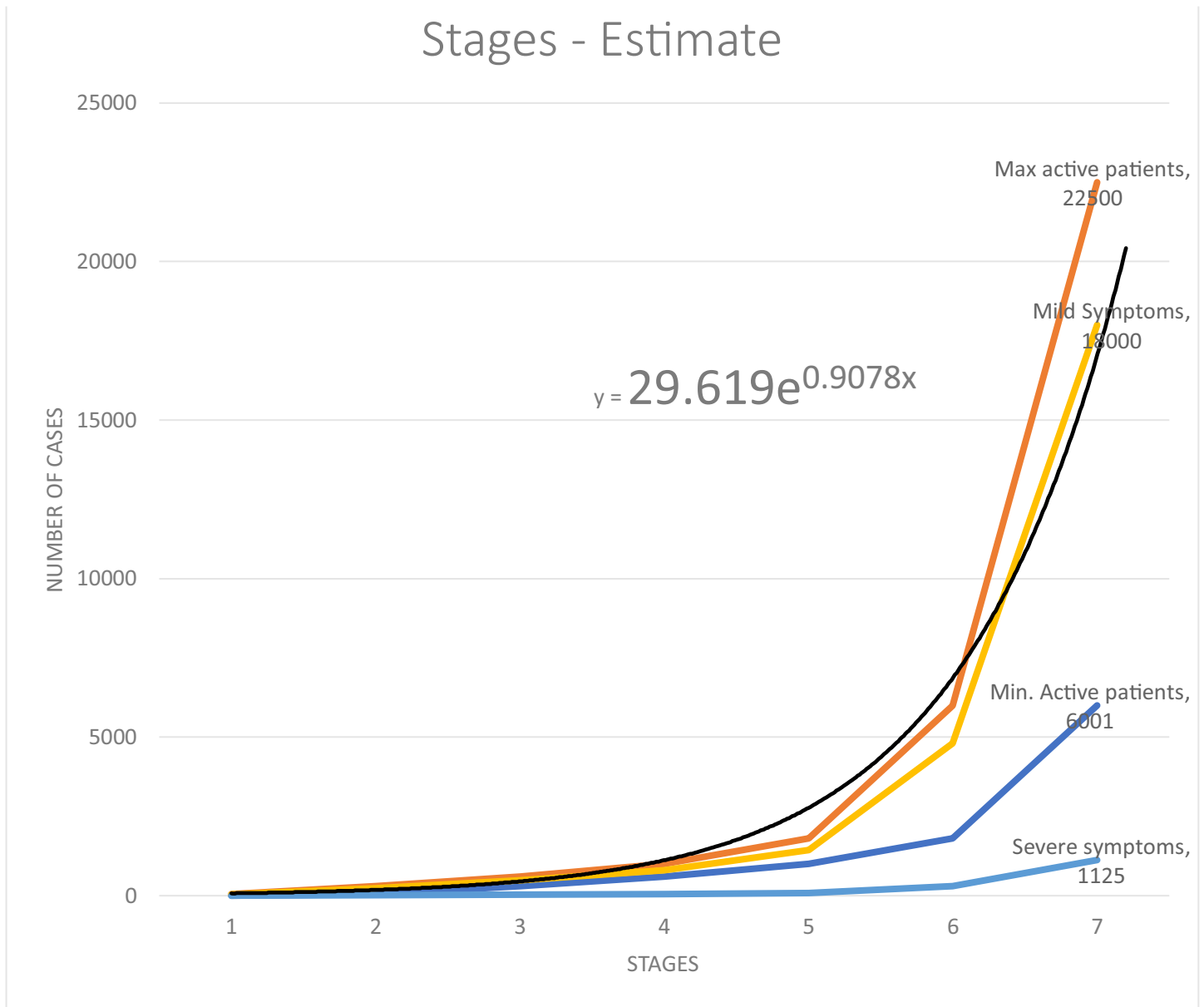
The plot equation - $y = 6E-304e^{0.0159x}$

It can be denoted as simply as $y = ke^{cx}$

The prediction also has to be done based on a similar equation. It is correct to assume that the number of cases which might come in the future will follow a similar trajectory and similar equation.



Predictions



The growth prediction is based on the equation - $y = 29.619e^{0.9078x}$

The equation used is same, with different constants. $y = ke^{cx}$

The Predictions should be divided in Stages, for better understanding and planning. Hence the 7-stage prediction is the suitable model for the same.

7 - Stage Prediction Model

Stages	Trigger to next stage	Active Patient range		Mild Symptoms	Moderate Symptoms	Severe symptoms
		Min	Max	80% of Active	15% of active	5% of active
1	38	0	50	40	7.5	2.5
2	225	51	300	240	45	15
3	450	301	600	480	90	30
4	750	601	1000	800	150	50
5	1350	1001	1800	1440	270	90
6	4500	1801	6000	4800	900	300
7		6001	22500	18000	3375	1125

Based on the above Stage predictions, the planning for housing and treatment of the patients need to be done. This include treatment and care for all categories of the Patients (Mild, Moderate and Severe).

Plan for COVID 19 positive patients

Active patient load: 0-50
trigger point:0 active patients

All positive cases (mild, moderate, severe) are admitted at MCH Kalamassery

Active patient load :50- 300
Trigger point: When there are 38 active patients this system is activated

Patients with mild symptoms

Expected number : 240

- 240 patients at ADLUX Angamaly

Patients with moderate symptoms

Expected number : 45

- 45 patients at MCH Kalamassery

Patients with severe symptoms

Expected number : 15

- 15 patients at MCH Kalamassery

Active patient load :300 – 600

Trigger point : When there are 225 active patients this system is activated

Patients with mild symptoms

Expected number : 480

- 240 patients at ADLUX Angamaly
- 240 patients at CIAL

Patients with moderate symptoms-

Expected number : 90

- 60 patients at MCH Kalamassery
- 30 patients AIIMS, Njarakkal

Patients with severe symptoms

Expected number :30

- 30 patients at MCH Kalamassery



Active patient load :600 -1000
 Trigger point :when there are 450 patients this system is activated

Patients with mild symptoms

Expected number : 800

- 300 patients at ADLUX Angamaly
- 300 patients at CIAL
- 200 patients at Rajiv Gandhi

Patients with moderate symptoms

Expected number : 150

- 70 patients at MCH
- 30 patients at AIIMS, Njarakkal.
- 50 patients at PVS hospital, Kaloore

Patients with severe symptoms

Expected number : 50

- Severe 30 at MCH Kalamassery
- Severe 20 at PVS hospital, Kaloore



Active patient load :1000 – 1800
 Trigger point :when there are 750 patients are there, this system is activated

Patients with mild symptoms

Expected number : 1440

- 600 patients at Block level FLTCs (15 no.s x 40 beds)
- 300 patients at ADLUX Angamaly
- 300 patients at CIAL
- 240 patients at Rajiv Gandhi indoor stadium

Patients with moderate symptoms

Expected number: 270

- 100 patients at at MCH
- 30 patients at AIIMS, Njarakkal.
- 70 patients at Private hospitals (unoccupied beds will be utilized at this point)
- 70 patients at PVS hospital, Kaloore

Patients with severe symptoms

Expected number : 90

- 40 patients at at MCH Kalamassery
- 30 patients at at PVS
- 20 patients at Private hospitals (unoccupied beds in ICU)



Active patient load :1800 – 6000
 Trigger point :when there are 1350 active patients, this system is activated

Patients with mild symptoms

Expected number: 4800

- 300 patients at at ADLUX Angamaly
- 300 patients at at CIAL
- 240 patients at Rajiv Gandhi indoor stadium
- 600 patients at Block level FLTCs (15 no.s x 40 beds)
- 3450 patients at Panchayath level FLTC

Patients with moderate symptoms

Expected number : 900

- 900 patients at private hospitals (unoccupied beds)

Patients with severe symptoms

Expected number : 300

- 100 at MCH Kalamassery
- 100 at PVS hospital, Kaloore
- 30 at AIIMS Njarakkal
- 70 at Private hospitals (unoccupied ICU beds)



Active patient load :6000 – 22500

Trigger point :when there are 4500 active patients, this system is activated

Patients with mild symptoms

Expected number : 18000

- 300 patients at ADLUX
- 300 patients at CIAL
- 240 patients at Rajiv Gandhi
- 600 patients at Block level FLTCs (15 no.s x 40 beds)
- 1650 patients at Panchayath level FLTC

Patients with moderate symptoms

Expected number :3375

- 3375 patients at private hospitals (unoccupied beds)

Patients with severe symptoms

Expected number : 1125

- 600 patients at Private hospital ICUs (unoccupied ICU beds)
- 350 patients at MCH Kalamassery
- 140 patients at PVS
- 40 patients at AIIMS Community Centre, Njarakkal



260 ventilators will be available in the district for treating critically ill COVID 19 patients





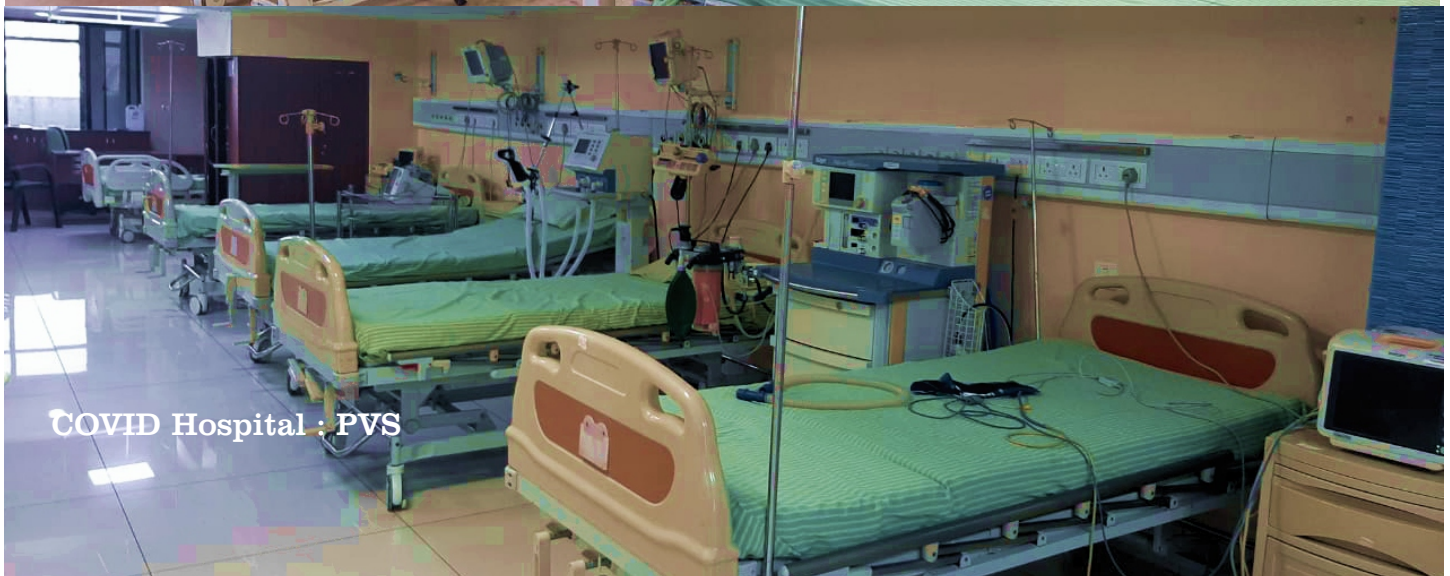
ICU - GMC Kalamassery



ICU - GMC Kalamassery



COVID Hospital : PVS



COVID Hospital : PVS



Annexure 1. List of Private hospitals & bed occupancy as on 15.06.2020

Sl	Name	Normal rooms	Normal rooms current	ICU	ICU current	Ventilator	Ventilator Current	Private Rooms	Private Rooms Occupied
1	VIJAYA KUMARA MENON HOSPITAL	100	40	3	0	2	0	35	28
2	Medical Trust Hospital	400	287	50	49	30	7	160	158
3	Sabine Hospital and Research Centre Pvt Ltd	82	47	6	0	1	0	36	32
4	Lakshmi Hospital Diwans Road Eranakulam	5	5	7	3	2	0	95	75
5	VIMALA HOSPITAL	20	12	5	0	0	0	20	12
6	Apollo Adlux Hospital	0	0	5	3	5	1	35	24
7	Guardian Angel Peace Mission Centre	32	21	0	0	0	0	32	17
8	Sree narayana institute of medical sciences	540	131	15	13	12	10	30	25
9	Akshaya Hospital	0	0	0	0	0	0	12	5
10	B&B MEMORIAL HOSPITAL	10	5	6	0	1	0	0	0
11	SANTHI CLINIC & HOSPITAL	20	0	0	0	0	0	40	13
12	SANGEETH HOSPITAL	42	16	0	0	0	0	42	10
13	Carmel Hospital	85	21	3	1	1	0	95	52
14	Devamatha Hospital	73	69	13	2	3	1	14	0
15	P S MISSION HOSPITAL	39	18	6	5	2	0	24	0
16	St Joseph's Hospital	225	150	20	11	3	1	115	91
17	MOSC Medical College Hospital, Kolenchery	630	182	148	62	18	7	319	239
18	Lakeshore hospital& Research Centre Ltd	158	112	80	24	26	6	0	0
19	Little Flower Hospital and Research Centre, Angamaly	610	170	80	40	4	0	200	140
20	MVJM HOSPITAL	10	4	0	0	0	0	10	1
21	kinder hospital	12	0	10	2	4	0	32	21
22	LAXMI HOSPITAL	48	23	0	0	0	0	23	23
23	St. Joseph's Hospital Trust Manjummel	33	9	8	2	2	0	59	28
24	Lourdes Hospital, Post Graduate Institute of Medical Sciences and Research	130	52	50	27	9	6	221	147
25	APVARKEY MISSION HOSPITAL	50	31	3	0	1	0	0	0
26	Holy cross hospital pattimattom	20	1	0	0	0	0	5	0
27	NAJATH HOSPITAL	70	13	4	3	0	0	0	0
28	Fatima Hospital	50	20	5	0	2	0	20	10
29	ESIC HOSPITAL UDYOGAMANDAL	100	76	10	10	0	0	0	0
30	S N Mission hospital	45	4	0	0	0	0	0	0
31	K M K HOSPITAL	0	0	0	0	0	0	37	16
32	Silverline Hospital	5	1	2	0	1	0	9	3
33	Devi Hospital Pvt Ltd	68	44	5	1	0	0	35	35
34	ESI Hospital Ernakulam	65	8	0	0	0	0	0	0
35	PMM HOSPITAL	30	12	0	0	0	0	20	11
36	ANNE MARY JOACHIM HOSPITAL	20	9	0	0	0	0	0	0
37	Joannes Psycho-Medical Centre	65	52	0	0	0	0	8	3
38	Nirmala Medical Centre	20	18	0	0	0	0	150	84
39	KAROTHUKUZH HOSPITAL	35	5	4	0	2	0	14	4
40	Cimar Cochin (A Unit Of Edappal Hospital Pvt Ltd)	75	18	0	0	0	0	47	18
41	MAGJ HOSPITAL MOOKKANNOOR	14	4	4	1	1	0	88	40
42	M.A.J. Hospital	150	39	10	3	4	0	109	39
43	C A Hospital Aluva Desom	40	4	2	0	1	0	0	0
44	Mediheaven hospital	40	10	0	0	0	0	0	0

Annexure 1. List of Private hospitals & bed occupancy as on 15.06.2020

51	SAMARITAN HOSPITAL, PAZHANGANAD	77	14	8	0	2	0	115	56
52	Anwar Memorial Hospital in Association with Charaka Medical Mission	0	0	0	0	0	0	0	0
53	Nedumchalil Trust Hospital Muvattupuzha	45	40	0	0	0	0	25	24
54	SREE SUDHEENDRA MEDICAL MISSION	125	29	12	5	1	0	75	29
55	MCS HOSPITAL	11	11	4	0	1	0	31	31
56	vathiyayath	15	0	5	0	0	0	45	14
57	Amrita institute of medical sciences	450	440	150	134	40	28	150	143
58	SDTTA HOSPITAL	40	3	0	0	0	0	18	3
59	Astermedcity	58	50	58	33	25	3	138	83
60	V G SARAF HOSPITAL PVT LTD	40	17	3	0	1	0	20	12
61	CHAITHANYA HOSPITAL	25	6	0	0	0	0	25	6
62	Polakulath Narayanan Renai Medicity	268	135	20	13	20	3	108	95
63	Sanjoe Hospital	113	22	24	1	4	0	137	74
64	Ernakulam Medical Centre	135	96	17	10	10	0	125	65
65	Krishna Hospital	10	0	5	2	0	0	30	6
66	Jacobs hospital	20	3	3	0	0	0	9	3
67	MADONNA HOSPITAL & RESEARCH CENTER	15	2	3	0	0	0	15	4
68	GAUTHAM HOSPITAL	33	2	11	4	1	0	34	9
69	RAJAGIRI HOSPITAL	42	22	115	51	40	11	281	168
70	Sunrise hospital	90	47	22	7	4	2	0	0
71	Lisie Hospital	225	154	80	71	30	20	220	210
72	VARMA HOSPITAL	8	0	0	0	0	0	8	1
73	KG HOSPITAL ANGAMALY	20	4	0	0	0	0	24	14
74	Dr. KUNHALUS NURSING HOME	14	0	2	0	0	0	26	8
75	St. George Hospital Vazhakulam	20	6	1	0	0	0	20	14
		6576	3069	1171	618	326	108	4138	2662

Annexure 2:List of block level FLTC

NAME OF REVENUE BLOCK	NAME OF FLTC	NO.OF BEDS
ANGAMALY	CSA AUDITORIUM, ANGAMALY	50
ALANGAD	DHANYA AUDITORIUM, PANAYIKULAM	60
EDAPPALLY	Udayan covention center, kottankavu	50
Koovappady	Community Hall, Rayamagalam, Kuruppampady	30
KOTHAMANGALAM	MAR BASIL CONVENTION CENTER	50
MULAMTHURUTHY	Jesus Generation Auditorium,Kandanad	20
MUVATTUPUZHA	ST.JOSEPH CATHOLIC CHURCH PARISH HALL PERUNGZHA	50
Palluruthy	St. Peters Parish Hall (Christhu jayanthi Hall)	25
Pampakuda	Edappara bhagavathi temple auditorium	25
PARAKADAV	Sree ragam auditorium chengamanadu	30
PAVOOR	Paravur -Vadakkekkara service co op. bank hall	35
Vadavucode	Njattukala Hill top	30
VAZHAKULAM	Model Residential School	100
VYPIN	Manjumatha church ,Parish Hall	30
KOCHI CORPORATION	Sayed Muhammed Memorial Community Hall	10
KOCHI CORPORATION	Nehru Memorial Town Hall, Mattancherry	150
KOCHI CORPORATION	Community Hall, Kacherippady, Palluruthy	30
	Total	775

Annexure 3: List of Panchayath level FLTC : Phase I

NAME OF PANCHAYATH/ MUNCIPALITY/ COPPORATION	NAME OF FLTC	NO.OF BEDS
Aikkaranad	Sreenarayana Gurugulam College of Engineering	30
ANGAMALY MUNICIPALITY	HOTEL FLORA INTERNATIONAL	60
ALANGAD	ST. ANTONY'S PARISH HALL, KONGORPILLY	
Amballoor	DAKSHA AYURETREAT.KOCHERY HILLS,KOTTATHAYI,KULAYITTIKKARA PO	20
ARAKKUZHA	ST MARYS CHURCH PARISH HALL ARAKKUZHA	50
ASAMANNOR	St.Marys Jacobite syrian church	
AVOLY	ST MICHEALS PARISH HALL RANDAR	50
AYAVANA	SACRED HEART AUDITORIUM AYAVANA	50
AYYAMPILLY	Austine Hall	
AYYAMPUZHA	St. GEORGE ENGLISH MEDIUM SCHOOL	40
Chellanam	St Antonys Church hall	30
Chendamangalam	Tourist information centre	
CHENGAMANADU	Sriragam auditorium	
CHERANELLOOR	St. James hall	20
Chittattukara	137 Service coop. bank	35
CHOORNIKKARA	KMA Auditorium	70
Chottanikkara	Souparnika Auditorium	20
Edakkattuvayal	Farmers Hall	20
Edathala	RAJEEV GANDHI AUDITORUM, EDATHALA	40
Edavanakkad	Pulikkanatu Auditorium	
Elamkunnappuzha	Oachanthuruth Service cooperative Bank Hall	
Elanji	St. Peters&Pauls Church Parish Hall,Elanj	
Ezhikkara	Metropolitan club	6
Kadamakkudi	ICMS College	
KADUNGALLOOR	GHANASHYAMA AUDITORIUM	
KALADY	SREE SANKARA COLLEGE KALADY	50
KALLOORKKAD	KAS AUDITORIUM KALLOORKAD	20
KANJOOR	JEEVALAYA CHENGAL	30
KARUKUTTY	St. JOSEPH CHURCH PARISH HALL	40
KARUMALLOOR	SNGIST COLLEGE AUDITORIUM	
Kavalangad	AIK Auditorium Oonnukal	
KEERAMBARA	SS GHS, KEERAMPARA	
KEEZHMAD	Model Residential School	100
Kizhakkambalam	St.Marys Church Hall, Thamarachal	40
KOTTAPPADY	Mar eliyas HSS, KOTTAPPADY	
KOOVAPADY	Holly Family Church hall ,	
Kottuvalli	St. Philomena's hall	
Kumbalam Panchayath	KUFOS Hall	30
Kumbalanghy	St josephs Parish Hall	20

Annexure 3: List of Panchayath level FLTC : Phase I

Kunnathunad	MS Auditorium	
KUNNUKARA	AHANA auditorium kunnukara	
KUTTAMPUZHA	mini stadiyum,vattattuppara	
Kuzhuppilly	Sahakarana nilayam Auditorium	
MALAYATTOOR	PUTHEN ANTONY HALL NEELESWARAM	40
MANEED		
MANJALLOORE	CARMEL SCHOOL BOARDING VAZHAKKULAM	20
MANJAPRA	HOLY CROSS FORANCE CHURCH	40
MARADY	K KARUNAKARAN MEMORIAL AUDITORIUM	20
Mazhuvannoor	CET College	
MOOKKANNOR	St. GEORGE SEHION CHURCH HALL	40
MUDAKUZHA	Govt. High School , Akanad ,Mudakkuzha	
Mulanthuruthy	Polakkulathu Tourist Home, Mulanthuruthy	30
Mulavukad	Alpha office space	
Nayarambalam	Mangalya Auditorium	
NEDUMBASSERY	cial auditorium	
NELLIKUZH		
Njarakkal	Manjooran Hall	
OKKAL	YMCA hall, Thannipuzha	
Paingottoor	St. Antony's Parish Hall Paingottoor	50
PAIPRA	ILAHIA ENGG COLLEGE HOSTEL	
Palakuzha	St.Johns Jacobite syrian Church Parish hall,Palakuzha	
Pallarimangalam	Irshadiya Public School Koovallor	
Pallipuram	Sri Krishna Auditorium	
Pampakuda	St.Marys Malankara Church Hall, Onakkoor	
PARAKADAVU	st.joseph church parish hall	
PINDIMANA		
Poothrikka	St Peters College Auditorium	
Pothanicadu	St. Thomas Hospital, Pothanicadu	40
PUTHENVELIKKARA	st.antony parish hall	
Pampakuda	Paramprikad community hall, Ramamangalam	10
RAYAMANGALAM	Community Hall,Rayamangalam,kuruppampady	
SREEMOOLANAGARAM	KERALA VARMA SANSKRIT UP SCHOOL	25
Thirumarday	Tagore Hall Thirumarady	
Thiruvaniyoor	Lions Hospital	
THURAVOOR	ANGAMALY CONVENTION CENTRE	50
Udayamperoor	Nirmalyam Auditorium,Puthenkavu	20
Vadakkekara	SNM Hall	35
Vadavucode Puthencruz	Druigst And Chemist Pharmacy College	
VALAKOM	EDEN CONVENTION CENTRE VALAKOM	75
VARAPETTY	varapetty panchayath hall,varapetty	
VARAPPUZHA	Mount Carmel Hall,Edampadam,Varapuzha	60
VENGOLA	Mahin Building	
Vazhakkulam	MES College	80
Vengoor	Markauma indoor stadium	

Annexure 3: List of Panchayath level FLTC : Phase I

MUNCIPALITY		
North Paravoor	RANGANATH AUDITORIUM	114
Kalamassery	ZAMARA International Convention &Exhibition Centre	
Maradu Municipality	EK Nayanar Auditorium	30
Kothamangalam	KALA AUDITORIYUM,KOTHAMNGALAM	50
ALUVA	TASS HALL	30
TRIPUNITHURA MUNCIPILITY	DAKSHA UDUPPI KSHETHRAM HALL	35
Koothattukulam	Marygiri School auditorium,Koothattukulam	
Piravom	Kochhu Palli Parish Hall	
Perumbavoor Municipality	EMS Town Hall, Perumbavoor	30
ELOOR	M K K NAIR HALL,CONTAINER ROAD ELOOR	
KOCHI CORPORATION	Poovath Abdul Khader Memorial Mini Community Hall	
COCHIN CORPORATION	COMMUNITY HALL	25
TRIPUNITHURA MUNCIPILITY	DAKSHA UDUPPI KSHETHRAM HALL	35
Thrikkakara Municipality	Aiyankali Memorial Hall	
KOCHI CORPORATION	Hayathul Madrassa	

Annexure 4: List of Panchayath level FLTC : Phase II

NAME OF PANCHAYATH/ MUNICIPALITY/ COPPORATION	NAME OF FLTC	NO.OF BEDS
Aikkaranad	SNGCE College Hostel Boys	30
Aikkaranad	Ezhippuram Community Hall	20
Aikkaranad	Kadamattom Community Hall	15
Alangad	NEERIKODE SOCIETY HALL	50
Alangad	PETTAH PAPPU HALL, KOTTAPPURAM	30
Alangad	VISWADEEPTHI AUDITORIUM, PANAYIKULAM	30
Alangad	LF Parish Hall , Panayikulam	30
ALUVA	Little Flower Hall	60
ALUVA	IMA Hall	40
ALUVA	St.Dominic Church Hall	140
ALUVA	Bhajana Mandapam,Cheerakada Temple	40
Amballoor	S.ignatious VHSS,Kanjiramattom	20
Amballoor	St,Francis,Amballoor	20
Amballoor	Govt.UPS Keechery	15
ANGAMALY	HOTEL G B PALACE	33
ANGAMALY	SURABHI AVENUE TOURIST HOME	30
ANGAMALY	SURABHI TOURIST HOME	40
ANGAMALY	HOTEL FLORA INTERNATIONAL	60
ARAKKUZHA	JACOBS ENTERTAINMENT	30
ARAKKUZHA	ST SEBASTIANS CHURCH HALL ARAKKUZHA	30
ARAKKUZHA	SH HOSPITAL ARAKKUZHA	10
AVOLY	VISWAJYUTHI ENGG COLLEGE VAZHAKKULAM	100
AVOLY	H M ARTS COLLEGE RANDAR	25
AVOLY	H M HSS RANDAR	20
AVOLY	NELLIPPILLY AUDITORIUM ADOOPPARAMBU	30
AYAVANA	ST MARYS JACOBITE CHURCH AUDITORIUM KARIMATTOM	35
AYAVANA	ST MARYS CHURCH KAVAKKAD	40
AYAVANA	ST MARYS JACOBITE CHURCH KALAMPOOR	25
AYAVANA	PAKALVEDU BUILDING	40
Ayyampilly	PBD LPS	
Ayyampilly	Puthussery Auditorium	
Ayyampilly	Sahakarana Nilayam Auditorium	
AYYAMPUZHA	Govt. LP SCHOOL , CHULLY	25
AYYAMPUZHA	St. GEORGE ENGLISH MEDIUM SCHOOL	40
AYYAMPUZHA	MARIYA BHAVAN ENGLISH MEDIUM SCHOOL	30
AYYAMPUZHA	KALADY PLANTATION HSS	60
Chellanam	Puthanthodu school Hall	15
Chellanam	St Sebastian Hall	20
Chellanam	St Xaviers Hall	20

Annexure 4: List of Panchayath level FLTC : Phase II

Chellanam	Emmanual Hall	15
Chendamangalam	Nair samajam building	
Choornikkara	ILFATH AUDITORIUM,KUNNATHERI,ALUVA	
Choornikkara	NIRMALA SCHOOL ALUVA	
Choornikkara	IDEAL PUBLIC SCHOOL THAIKKATTUKKARA ALUVA	
Choornikkara	SAINT FRANCIS SCHOOL ASOKAPURAM ,ALUVA	
Choornikkara	TALENT SCHOOL,ASOKAPURAM ALUVA`	
COCHIN CORPORATION	COMMUNITY HALL	25
COCHIN CORPORATION	ADS HALL	10
COCHIN CORPORATION	SREENARAYANA HALL	15
COCHIN CORPORATION	BETHLEHEM PARISH HALL	15
COCHIN CORPORATION	TSUNAMI HALL	20
COCHIN CORPORATION	COMMUNITY HALL	10
cochin corporation	Karthkeyan Hall	14
cochin corporation	corporation Building	10
cochin corporation	Community Hall	10
cochin corporation	Gallery Auditorium	
cochin corporation	Pandit Karuppan Hall	
cochin corporation	SasthaHall	
cochin corporation	Councillor Office	
KOCHI CORPORATION	Ernakulam Town Hall	
Edakkattuvayal	St George Jacobite Syrian Church, Vattappara	20
Edakkattuvayal	Mar Debanan Orthodox Church,	20
Edathala	MUKKOTTIL TEMPLE AUDITORIUM	
Edathala	HIGNESS AUDITORIUM, KUNJATTUKARA,EDATHALA	
Edathala	DEVI AUDITORIUM,KUNJATTUKARA,EDATHALA	
EDATHALA	KMJ HALL, KUZHIVELIPPADY	
Edathala	ST.PIUS ADITORIM,CHOONDY,EDATHALA	
Edathala	HORMIS AUDITORIUM,CHOONDY,EDATHALA	
Edavanakkad	SN Sangam Auditorium	
Elamkunnappuzha	Karuthedam bank Hall	35
Elanji	SNDP Hall Elanji	
Elanji	Sreemath Bhagavathy Temple Auditorium, Perumbadavom	
Eloor	S C S MENON HALL,ELOOR	60
Eloor	CARMEL HALL,MANJUMMAL	50
Eloor	E M J HALL,ELOOR	20
Ezhikkara	Pre metric hostel	5
kadungalloor	Simphony auditorium	15
kadungalloor	Muthukkad NSS auditorium	15
kadungalloor	Chandrashekarapuram shva temple oottupura	20

Annexure 4: List of Panchayath level FLTC : Phase II

kadungalloor	kunnil temple ,oottuppara	30
KALLOORKKAD	ST.JOHNS PARISH HALL	20
KALOORKADU	ST MARYS PARISH HALL NAGAPPUZHA	20
KALOORKADU	ST.AUGUSTIN PARISH HALL	20
KALOORKADU	VYDHYA AYURVEDA HOSPITAL	10
KARUKUTTY	St. JOSEPH CHURCH HALL	40
KARUKUTTY	St. XAVIR'S CHURCH PARISH HALL	40
KARUKUTTY	GLPS KARUKUTTY	30
KARUKUTTY	SNDP HALL	40
karumalloor	SNGIST COLLEGE AUDITORIUM 1	20
karumalloor	SNGIST COLLEGE AUDITORIUM 2	30
karumalloor	SNGIST COLLEGE AUDITORIUM 3	20
karumalloor	SNGIST COLLEGE AUDITORIUM 4	30
Keezhmad	YMCA ThhottumughomAluva	
Keezhmad	MN HALL	
Keezhmad	NK Auditorium	
Keezhmad	Edayappuram Jama ath Hall above 800 sq m	
Keezhmad	M A K hall, Thottumugham	
Kizhakkambalam	BethlahemDayara school,Njaralloor	
Kizhakkambalam	Alma's Auditorium	
Kizhakkambalam	Maritime Academy pazhanganad	
Kizhakkambalam	St.Joseph school	
Kochi Corporation	St.Maries Anglo Indian Girls High School	
Kochi Corporation	M.A.S.S. LP School	
Kochi Corporation	Govt. HSS Panayappilly	
Kochi Corporation	EMGHS, Fortkochi	
Kochi Corporation	Hidayathul Islam LP School, Nambiapuram, Palluruthy	
Koothattukulam	Sai Auditorium, koothattukulam	
Koothattukulam	Lions Club Hall, Koothattukulam	
Kottuvalli	Thrikapuram community hall	
Kottuvalli	Thrikapuram karayogam hall	
Kottuvalli	Kaitharam karayogam hall	
Kottuvalli	Bhalabhadra auditorium	
Kumbalam	Kamoth Sree Ranjini Auditorium, Panangad	30
Kumbalam	St. Sebastian Church Hall , Madavana	20
Kumbalam	Ganesanatha Hall, Panangad	25
Kumbalam	St.Antony's Church Hall, Panangad	20
Kumbalanghy	Edakkat hall	15
Kumbalanghy	Philomina HALL	20
Kumbalanghy	St George Parish Hall	20
Kumbalanghy	St. Anns hall	20
MANJALLOORE	JOSH PAVALION	20
MANJALLOORE	JOSH PAVALION	20
MANJALLOORE	ST SEBASTIANS CHURCH PARISH HALL VADAKODE	30
MANJALLOORE	VIMALAMATHA CHURCH KADALIKKAD	30

Annexure 4: List of Panchayath level FLTC : Phase II

MANJAPRA	AMBADATH MALIKA HALL	30
MANJAPRA	HOLLY CROSS FORANCE CHURCH PARISH HALL	60
MANJAPRA	St.MARRY'S JACOBITE CHURCH PARISH HALL	50
MANJAPRA	St. GEORGE PARISH HALL	60
Maradu Municipality	Ambedkar Hall	15
Maradu Municipality	Priyadarshini Hall	15
Maradu Municipality	Lemerdian Auditorium	30
Maradu Municipality	BTH Sarovaram Hall	30
MARADY	QUEENS AUDITORIUM ULLAPPILLY	25
MARADY	S N AUDITORIUM MATTATHOOR JN	20
MARADY	CM MAMMACHAN COCHIN COLLEGE HOSTEL	30
MARADY		
MOOKKANNOOR	COMMUNITY HALL	55
MOOKKANNOOR	St. JOSEPH CHURCH HALL	30
MOOKKANNOOR	CO-OPERATIVE BANK HALL	25
MOOKKANNOOR	CHRISTHU JAYANTHI 2000 MEMORIAL HALL	40
Mulanthuruthy	Mar Gregorious Bethlahem Chappal	20
Mulanthuruthy	Koranchira ST George Chappal	20
Mulanthuruthy	Hinterland Village Resort	20
Mulanthuruthy	Toch H Institute of Science and Technology	20
Mulavukad	Bolgatty Palace	
Nayarambalam	Ambapadma Auditorium	
Njarakkal	St. Mary's Hall	
Njarakkal	SN Auditorium	
Njarakkal	Island Club Hall	
Njarakkal	KTX Hall	
NORTH PARAVUR MUNICIPAL	kavitha event hub	70+15
PAIPRA	KENZ CONVENTION CENTER	30
PAIPRA	KYS AUDITORIUM	30
PAIPRA	SHAMMA AUDITORIUM	30
PAIPRA	KAVITHA CONVENTION	30
Palakuzha	Govt. Ayurveda Hospital Palakuzha	
Palakuzha	St.Joseph Forane church, Marika	
Palakuzha	Panchayth Community Hall, Palakizha	
Pallippuram	St.Marys Jacobite church hall	
Pallippuram	Samoothya Seva Sangham	25
pallippuram	sahothara bhavan	25
Pampakuda	SNDP Hall Pampakuda	
Pampakuda	Block Pncahyath Hall, Pampakuda	
Pampakuda	Sai Subbho Centre Hall, Pampakuda	

Annexure 4: List of Panchayath level FLTC : Phase II

Piravom Municipality	Valiyapalli Parish Hall	
Piravom Municipality	YMCA Piravom	
Piravom Municipality	Mam Auditorium	
Poothrikka	PET Rose Auditorium	
Thirumarady	St Anns Parish Hall, Thirumarady	
Thirumarady	St.Joseph Church, Kakkoor	
Thirumarady	St.George Orthodox Valiyapally , Mannathoor	
Thirumarady	St, Marys Jacobite Parish Hall, Attinkunnu	
Thirumarady	St.Johns Jacobite Church Hall, Nellikkunnu	
Thirumarady	SNDP Hall, Mannathoor	
Thiruvaniyoor	Thiruvaniyoor Gramapanchayat ,Prakash tharayil Community Hall	20
Thiruvaniyoor	Palse Auditorium	15
Thiruvaniyoor	St.Johns jacobite church parish hall	
Thiruvaniyoor	Kurinjippally Idavaka Hall, Athani	
Thiruvaniyoor	YMCA Hall	
Thiruvaniyoor	Vyapara bhavan hall	
THURAVOOR	ANGAMALY CONVENTION CENTRE	60
THURAVOOR	ORIENTAL CONVENTION CENTRE	50
THURAVOOR	ALPHONSA SADAN SPECIAL SCHOOL	30
THURAVOOR	INFANT JESUS PARISH HALL	40
Tripunithura	NSS Hall,Thiruvankulam	20
Tripunithura	St.George LPS,Thiruvankulam	20
TRIPUNITHURA MUNCIPILITY	THARAMRKKAU AUDITIRIUM	20
TRIPUNITHURA MUNCIPILITY	PUSHPANJALI AUDITORIUM	25
TRIPUNITHURA MUNCIPILITY	DAKSHA UDUPPI KSHETHRAM HALL	35
TRIPUNITHURA MUNCIPILITY	THAMARAMKULANGARA OOTTUPURA HALL	35
Udayamperoor	Sunahados Parish Hall	20
Vadakkekara	Krishna auditorium	35
Vadakkekara	St. Louis Parish hall	20
Vadavucode Puthencruz	Orupppil Auditorium, Karimugal	25
Vadavucode Puthencruz	Cheruthottukunnel Parish Hall	20
Vadavucode Puthencruz	Paul P Mani Auditorium, Vadavucode (Panchayat	25
Vadavucode Puthencruz	FACT Recreation Club, Ambalamugal	20
VALAKOM	COMMUNITY HALL VALAKOM	20
VALAKOM	KANAV PARISH HALL MEKKADAMBU	40
VALAKOM	ST MARYS PARISH HALL RACKAD	40
VALAKOM	ST MARYS HALL AMBALAMPADY	40
VARAPPUZHA	St.George Parish Hall,Puthenpally	40
VARAPPUZHA	Santa Mariya Hall,Edampadam	30
VARAPPUZHA	Vyapari Vevasayi Ekopana Samithi Town Unil Hall,Varapuzha	20
VARAPPUZHA	Christ the King Parish Hall	40
Vazhakkulam	Royal convention Centre	
Vazhakkulam	Ream convention center Mudikkak	
Vazhakkulam	Mass auditorium	
Vazhakkulam	panchayath hall	30
Udayamperur	St.Mary's Othodox syrian curch hall	20
Udayamperur	SAS Auditorium	20

Annexure 5: List of CCC for admitting COVID suspect cases with mild symptoms in the event of community spread

SL NO	COVID CARE CENTRES	Total Rooms
1	RAJAGIRI VISWAJYOTHI,VENGOOR	34
2	SCMS,MUTTAM	60
3	SCMS BOYS HOSTEL,PALISSERY	71
4	DIVYAKARUNYA ASHRAMAM	27
5	MUTHOOT GIRLS	35
6	ILM METHALA	52
7	ASHIRBHAVAN,KACHERIPPADY	33
8	ASHIYANA,KAKKANAD	69
9	RAJAGIRI MENS HOSTEL,KAKKANAD	96
10	RETREAT CENTRE CHITTOOR	47
11	RAJAGIRI MENS,KALAMASSERY	74
12	JYOTHIRBHAVAN,KALAMASSERY	50
13	NUALS,KALAMASSERY	77
14	AYURVEDA HOSPITAL	64
15	XIME	88
16	SNGIST	48
17	MUTHOOT BOYS	26
18	ALPHA PASTER	39
19	MAR BASELIOUS , NELLIKUZHI	
	TOTAL	990

